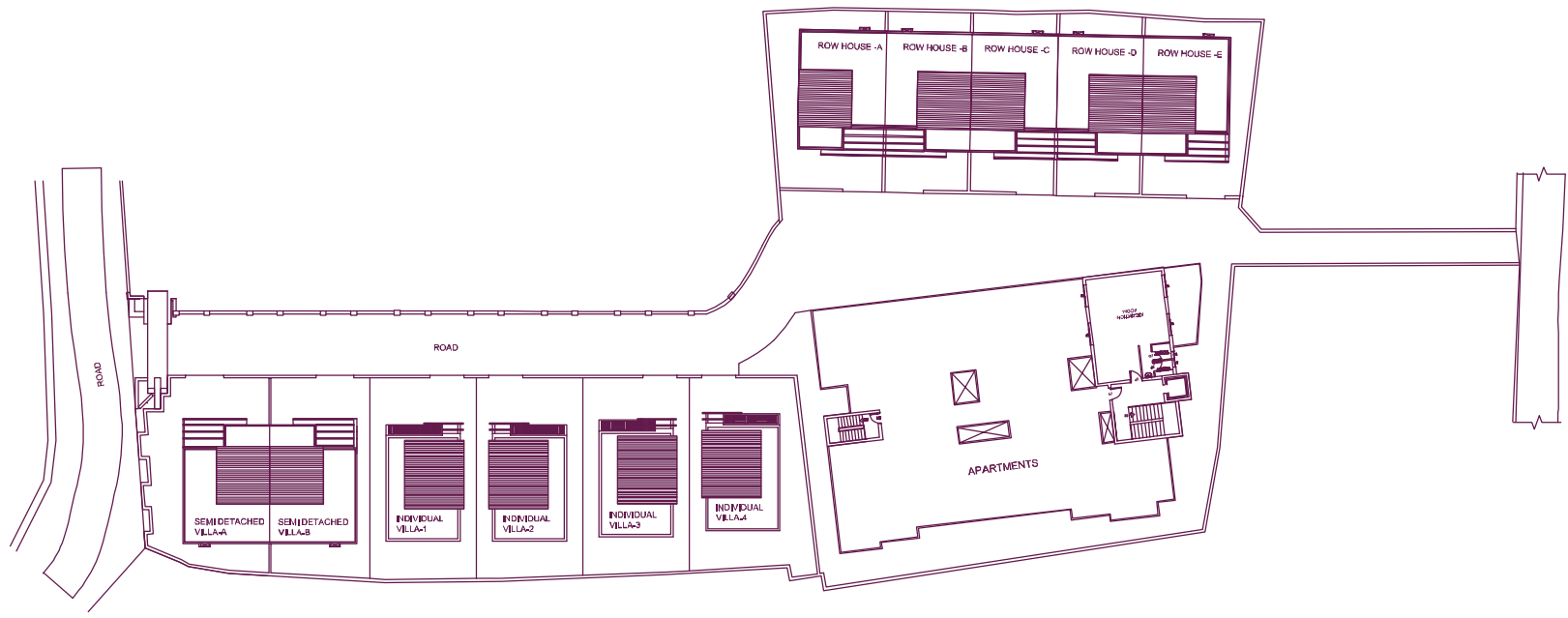




orchid
Villas & Apartments

A GATED COMMUNITY PROJECT FROM
PROMINARE BUILDERS & DEVELOPERS





orchid villas and apartments

Orchid Villas and Apartment is a gated community project, which is currently under development on Companyadi Road, Behind Little Flower College, Guruvayoor. The project is being developed by Prominare Builders & Developers with their office based in Guruvayoor, near the Private Bus Stand, East Nada. Orchid is a community living project that is a combination of two semi detached villas, four signature villas, five row houses and 34 apartments of studio's, 1BHK and 2BHK variations, with the building itself approved by the Guruvayoor Municipality. This maiden venture from Prominare Builders & Developers offers a fresh perspective to contemporary urban living in one of the most divine living destinations in India, Guruvayur. No matter what you aspire to, Orchid has the home to suit your needs and comfort. Whether it is a distinguished lifestyle in a signature villa or comfortable spaces with fine views from the apartments, Orchid offers something for everyone. A vibrant community, promising peace and tranquillity with easy access to commercial routes and centres, and of course with your beloved Gurvayurappan as a friendly neighbour, you will find it all at Orchid Villas and Apartments.



villas

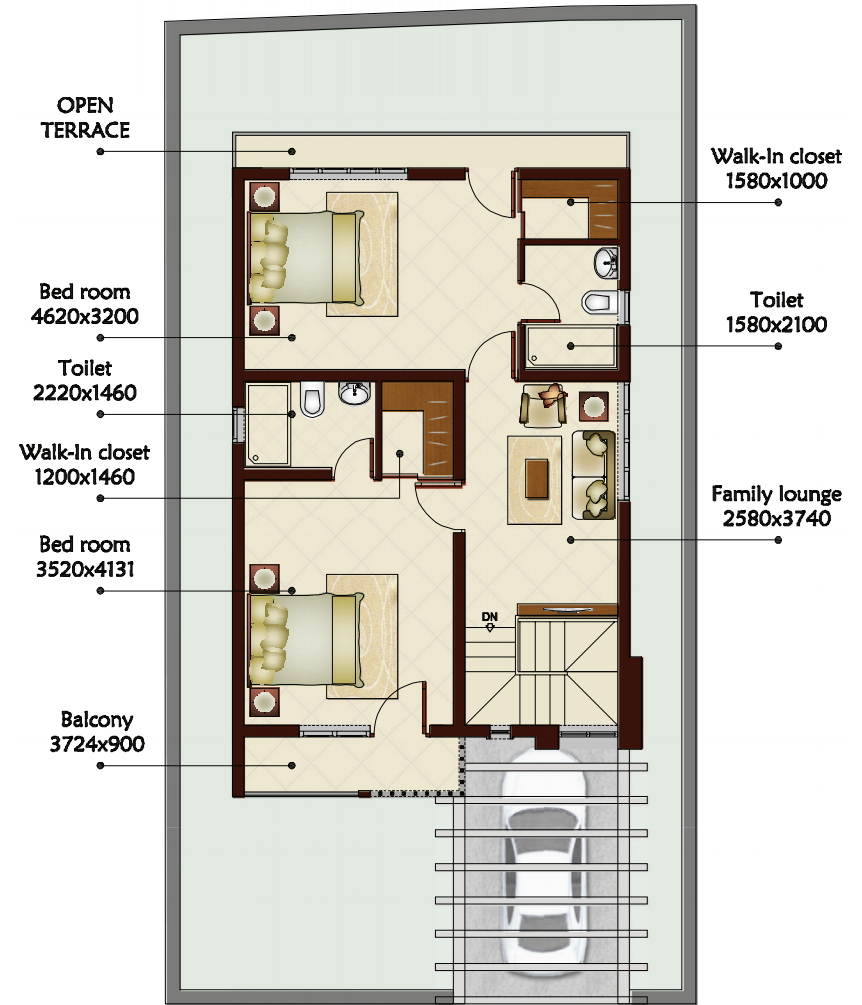
Orchid Villas are designed to meet the needs of those who seek exclusivity. It includes lavish family living areas, kitchen and additional working spaces. The villas are equipped with world-class fixtures and fittings and enable all modern electrical appliances supported by a power back up facility. With landscaping and compound wall on all four sides, Orchid Villas exemplify superior design and fine living.



Ground floor plan
951 sqft | 88.38 sqm



First floor plan
809.89 sqft | 75.18 sqm



The design specifications, unit plans, layout plan, number of floors etc. are indicative only. Accessories shown in some of the pictures such as furniture, cabinets, electrical appliances, light fittings, paintings, wall & floor texture are indicative/decorative and are not part of the sale offered.

twin villas

Orchid Twin Villas provide homeowners a glimpse into the future of gated living. It offers a contemporary approach to community living and the picturesque landscape of the ideal Kerala home. The semi-detached twin villas include luxurious family living and dining areas along with 3 bedrooms, each with its own dresser and bathroom. The kitchen is equipped with granite work-tops along with the optional cabinets, hob and chimney. Each twin villa has its own car park, garden on three sides and utilities storage. Finished with state of the art accessories, Orchid Twin Villas are a mark of exquisite design.

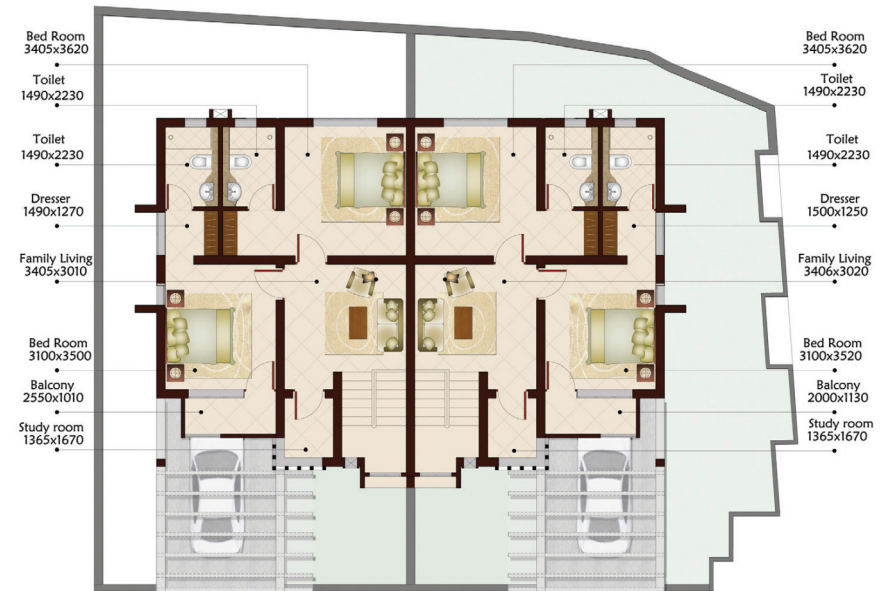


twin villas

Gross Area
1650 sqft | 153,34 sqm

Ground floor plan
921 sqft | 85.56 sqm

First floor plan
729 sqft | 67.73 sqm



The design specifications, unit plans, layout plan, number of floors etc. are indicative only. Accessories shown in some of the pictures such as furniture, cabinets, electrical appliances, light fittings, paintings, wall & floor texture are indicative/decorative and are not part of the sale offered.

apartments

Spread over ground plus three storeys, Orchid Apartments offer luxurious living spaces in a modern and creatively inspired residential complex. The apartments are available in studio's, 1 and 2 bedroom options. All apartments comprise a living, dining and kitchen area, bedroom and bathroom. The apartments offer individual car parking (optional), lavish common spaces connected with an elevator. To ensure the wellbeing of our patrons, fire safety measures have been employed along with round the clock security personnel. With meticulously designed interiors and top-notch furnishings, Orchid Apartments is the apex of apartment living.

apartments

Ground floor plan



1st, 2nd and 3rd floor plan



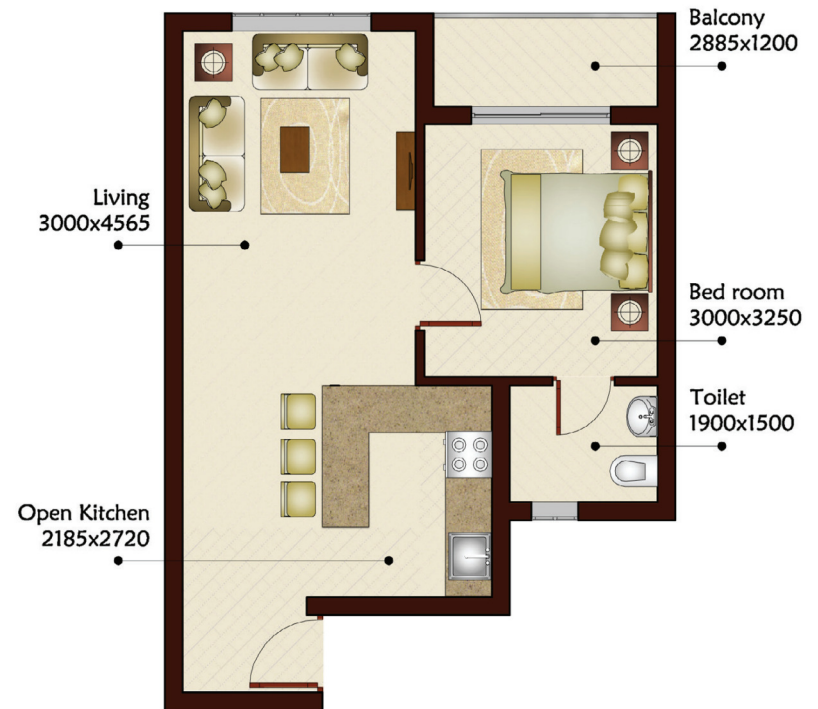
The design specifications, unit plans, layout plan, number of floors etc. are indicative only. Accessories shown in some of the pictures such as furniture, cabinets, electrical appliances, light fittings, paintings, wall & floor texture are indicative/decorative and are not part of the sale offered.

apartments - 1 bedroom

Type E | 1st, 2nd & 3rd floor plan | 675 sqft



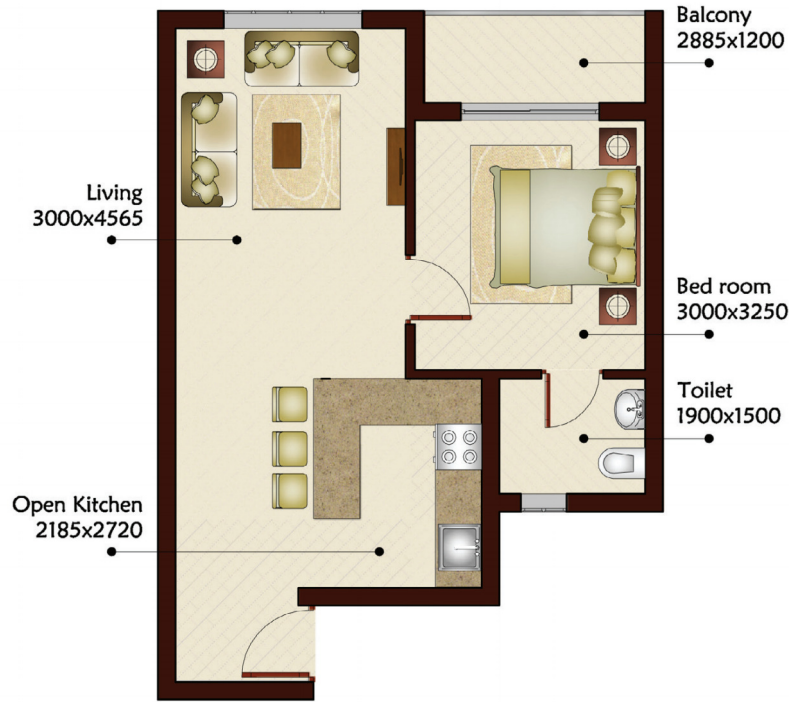
Type F | 1st, 2nd & 3rd floor plan | 669 sqft



The design specifications, unit plans, layout plan, number of floors etc. are indicative only. Accessories shown in some of the pictures such as furniture, cabinets, electrical appliances, light fittings, paintings, wall & floor texture are indicative/decorative and are not part of the sale offered.

apartments - 1 bedroom

Type H | 1st, 2nd & 3rd floor plan | 669 sqft



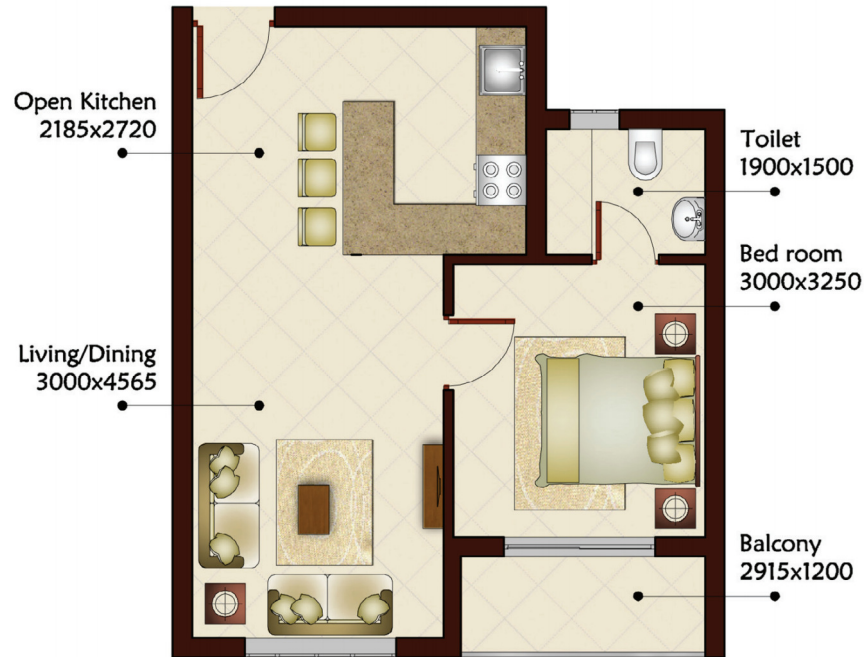
Type J | 1st, 2nd & 3rd floor plan | 643 sqft



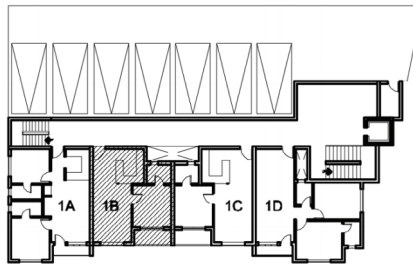
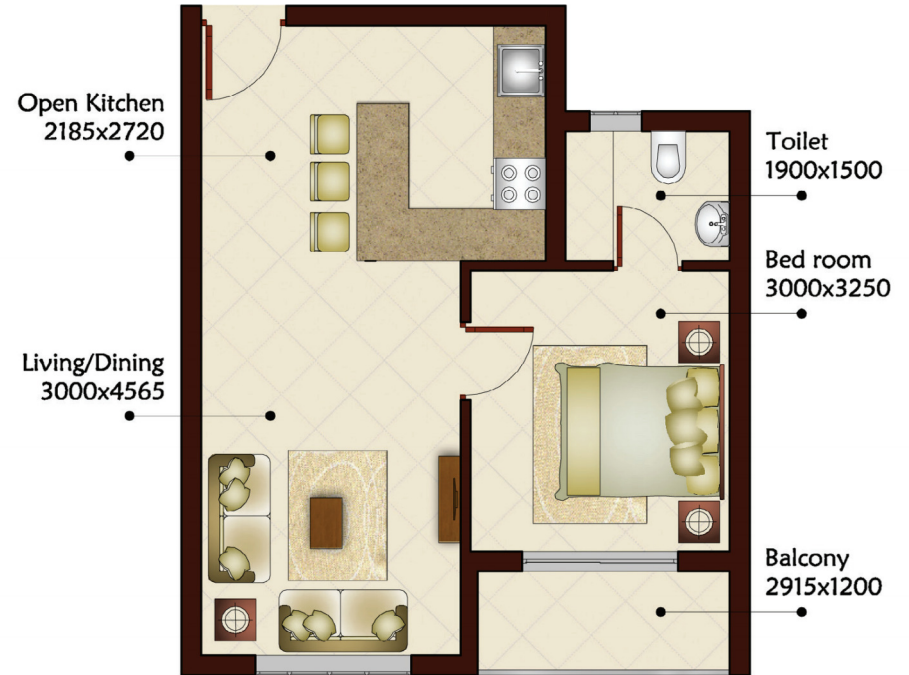
The design specifications, unit plans, layout plan, number of floors etc. are indicative only. Accessories shown in some of the pictures such as furniture, cabinets, electrical appliances, light fittings, paintings, wall & floor texture are indicative/decorative and are not part of the sale offered.

apartments - 1 bedroom

Type B | Ground floor plan | 643 sqft



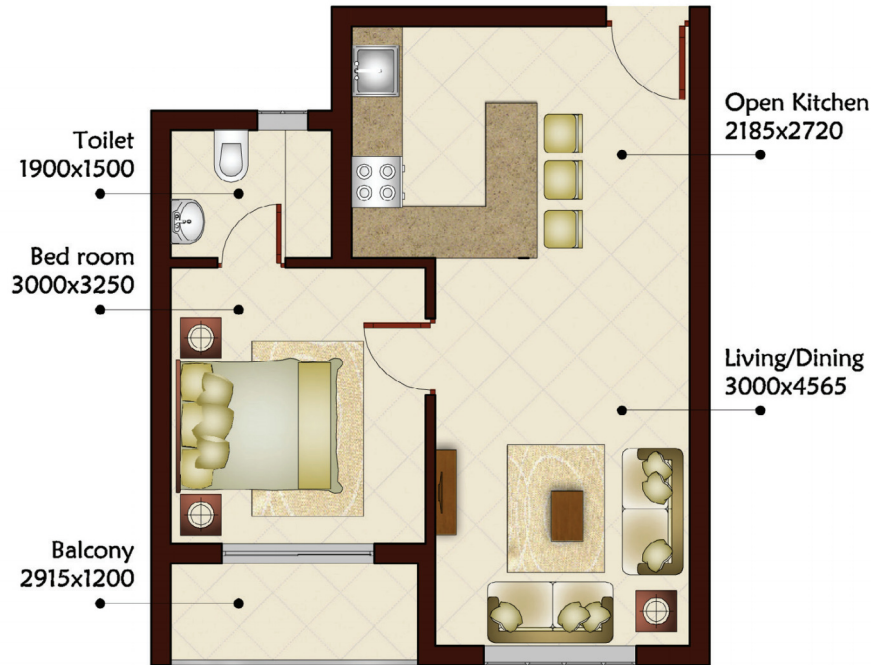
Type B | 1st, 2nd & 3rd floor plan | 643 sqft



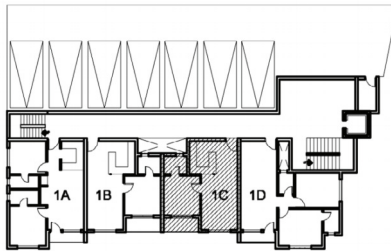
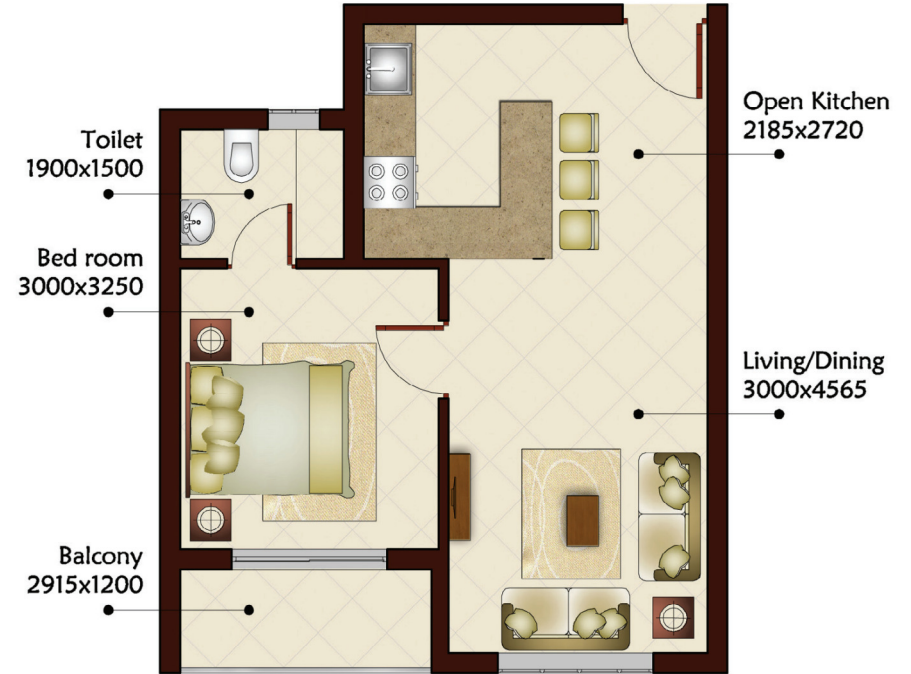
The design specifications, unit plans, layout plan, number of floors etc. are indicative only. Accessories shown in some of the pictures such as furniture, cabinets, electrical appliances, light fittings, paintings, wall & floor texture are indicative/decorative and are not part of the sale offered.

apartments - 1 bedroom

Type C | Ground floor plan | 643 sqft



Type C | 1st, 2nd & 3rd floor plan | 643 sqft



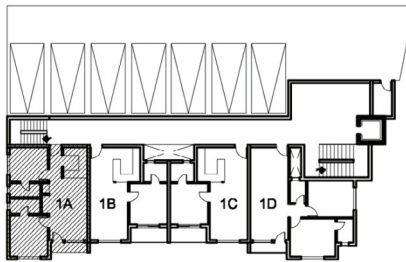
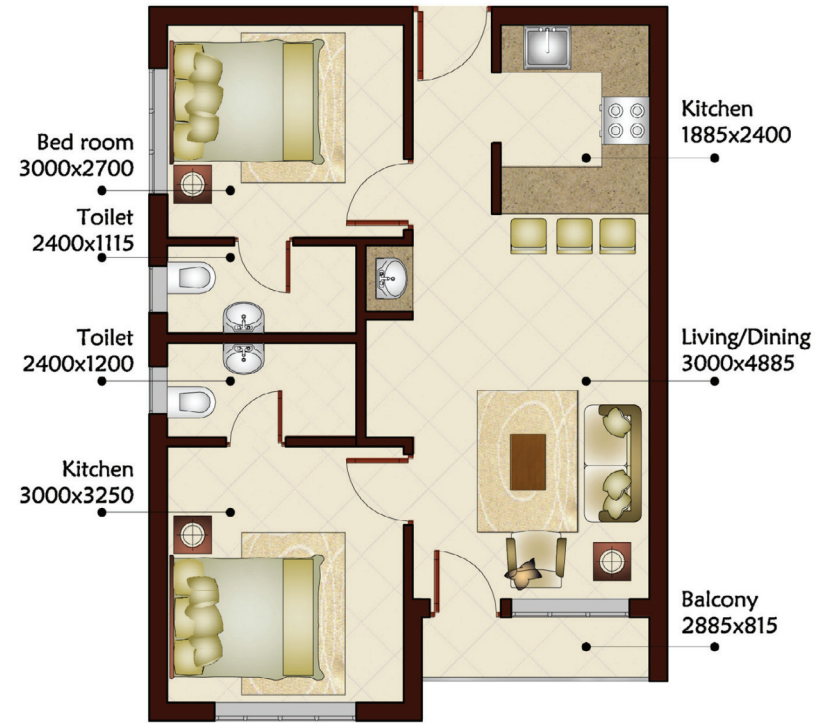
The design specifications, unit plans, layout plan, number of floors etc. are indicative only. Accessories shown in some of the pictures such as furniture, cabinets, electrical appliances, light fittings, paintings, wall & floor texture are indicative/decorative and are not part of the sale offered.

apartments - 2 bedroom

Type A | Ground floor plan | 779 sqft



Type A | 1st, 2nd & 3rd floor plan | 779 sqft



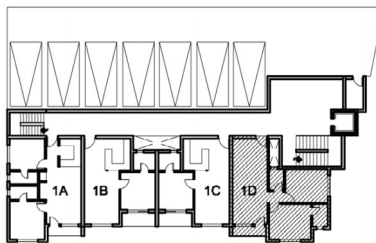
The design specifications, unit plans, layout plan, number of floors etc. are indicative only. Accessories shown in some of the pictures such as furniture, cabinets, electrical appliances, light fittings, paintings, wall & floor texture are indicative/decorative and are not part of the sale offered.

apartments - 2 bedroom

Type D | Ground floor plan | 818 sqft

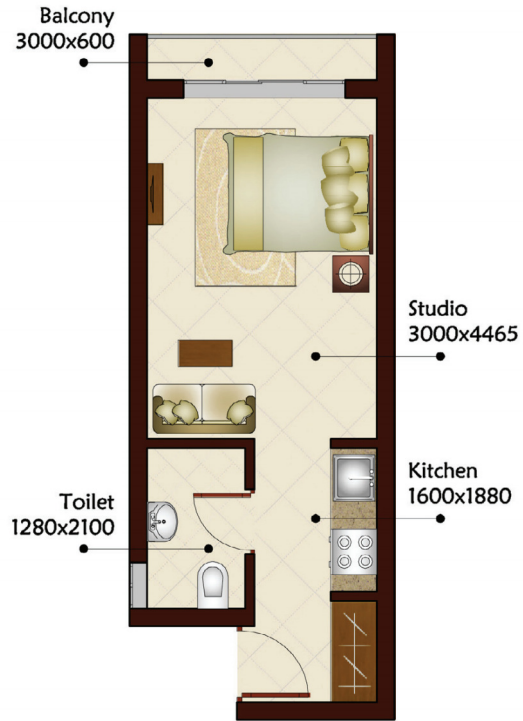


Type D | 1st, 2nd & 3rd floor plan | 818 sqft

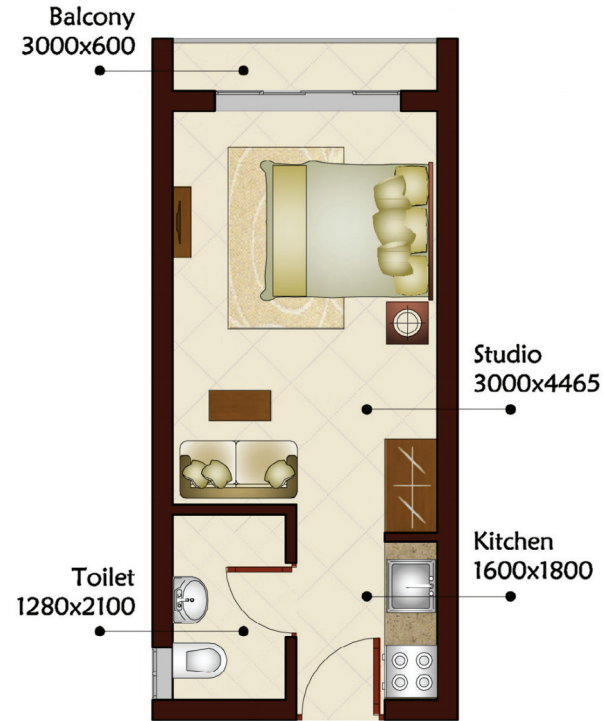


The design specifications, unit plans, layout plan, number of floors etc. are indicative only. Accessories shown in some of the pictures such as furniture, cabinets, electrical appliances, light fittings, paintings, wall & floor texture are indicative/decorative and are not part of the sale offered.

Type G | 1st, 2nd & 3rd floor plan | 379 sqft



Type I | 1st, 2nd & 3rd floor plan | 364 sqft



The design specifications, unit plans, layout plan, number of floors etc. are indicative only. Accessories shown in some of the pictures such as furniture, cabinets, electrical appliances, light fittings, paintings, wall & floor texture are indicative/decorative and are not part of the sale offered.

community facts at a glance

COMMUNITY LIVING

- Luxury Villas & Apartments designed to enhance standards of living.
- Gated entry and community living in gated premises.
- Secured living with 24 hour security personnel and CCTV surveillance.
- High quality maintenance and personalised services.
- Dedicated communal spaces.
- Well-equipped gym and recreational spaces.

INFRASTRUCTURE

- Carefully designed infrastructure for hassle free living.
- Well-designed roads with ramps for the elderly and physically challenged within the community.
- Uninterrupted water supply.
- Environment friendly township development - waste management, rainwater harvesting.
- 24 hour power backup facility.
- Individual manicured landscape and flowerbed for villas and row houses.

CONVENIENT ACCESSIBILITY

Close proximity to the following destinations and centres:

- Guruvayoor temple
- Mammiyoor temple
- Little Flower Convent and College
- Punnathoor Aanakkota
- Chavakad Beach
- Railway station and Private & KSRTC Bus Stand

SPECIFICATIONS

- Foundation: as designed to suit the soil condition of the area.
- Anti termite treatment to each unit.
- Euro make Vitrified tiles flooring of size 24" x 24" with skirting in all rooms and ceramic anti-skid floor tiles in toilets.
- Glazed aluminium windows.
- Sanitary fittings and Chrome Plated fittings of reputed make.
- ISI marked concealed plumbing and electrical conduit wiring.
- Covered car park for each villa.



a perfect partnership

Prominare Builders & Developers Pvt. Ltd, is proud to be associated with JAID Architects, a young firm by two eminent architects Ar, Brijesh Unni and Ar, Pooja Brijesh, on their maiden project in Guruvayur, Ar, Brijesh Unni a design oriented hands on construction and development professional with ten years international experience remain the backbone of JAID. An expertise in hotel design development has bagged due acclaim for high end residential and commercial projects with Indian as well international clients. Ar, Pooja Brijesh a versatile and luminous person a university rank holder remains the innovative and creative brain behind the creations of JAID Architects. JAID Architects remain to expand the boundaries of design and buildings engaging the challenges of contemporary ethos along with acknowledgement of the regions valuable traditions. The firm is dedicated to quality in all realms of the project - from preparing the brief to site analysis to design and construction.



extra attention for your home

We understand that your world extends beyond the boundaries of your own home and Prominare Plus is an exclusive service that further extends the Prominare Builders & Developers Pvt. Ltd. experience from just delivery of your property to you. We encourage our patrons and homeowners to avail this service to ensure a more comfortable lifestyle with benefits including:

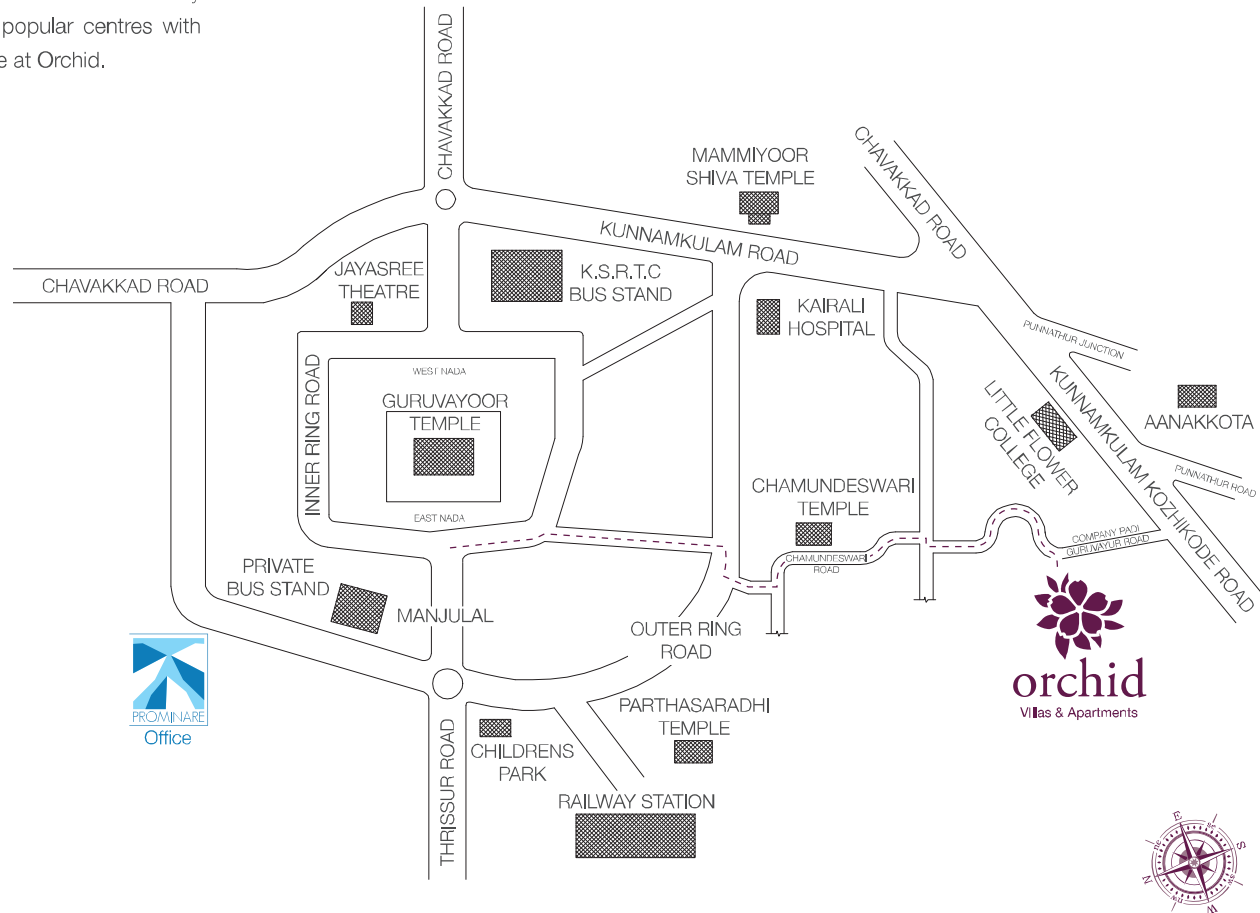
- Realtor Services (Sale, lease, rent)
- Facility Management (Cleaning and handymen)
- Laundry
- Car, Chauffeur and Travel (Rentals, taxi's, airport/railway pickup and drop off, driver)
- Healthcare & Wellbeing (Medical services and home nurse services)

All above services are subject subject to availability and costs.

closer to home

Guruvayoor today has become an important destination with all the facilities for residents and tourists to visit and is well linked by road and rail. Orchid Villas and Apartments is conveniently located close to the main temple area, railway station, the bus stand and and nearby shopping centres and a short drive away from Trichur town. Here listed are some popular centres with indicative distances shown from your home at Orchid.

- Guruvayur Temple 1.6 km
- Punnathoor Aanakkota 3 km
- Mammiyoor Temple 1.5 km
- Guruvayur Railway station 1.5 km
- Guruvayur Bus Stand 1.7 km
- Guruvayur Post office 1.5 km
- Calicut City 129 km
- Cochin City 108 km
- Thrissur City 27 km
- Nedumbassery Airport (Ernakulam) 77 km
- Karipur Airport (Calicut) 87 km
- Kairali hospital 1.6 km





For sales enquiries, please contact:

Prominare Builders & Developers
Office no. 5, 2nd Floor
Kuttikrishna Smaraka Building
Near Indira Gandhi Town Hall
East Nada - Guruvayur, Pin 680101
Tel: +91 487 3105733
Mob: +91 86062 25556, +91 86062 26665
info@prominarehomes.com
www.prominarehomes.com

CONTENT AND LIABILITY DISCLAIMER

The facilities, specifications, accessories and brands proposed for the building of Orchid Villas & Apartments are correct at the time of printing, but in the event of any changes and modifications due to unforeseen circumstances, Prominare Builders & Developers does not accept any responsibility or liability for indirect, consequential or incidental damages caused by way of loss of profits, loss of revenue, loss of use, arising out of related information. All the contents, specifications, photographs, illustrations and drawings within this catalogue ("information") are provided purely for illustrational and artistic purposes only, and are not to be relied on for any other purpose including but not limited to details, specifications, sizes, materials, renderings and such like. We make no representations or warranties therein nor do we accept any responsibility or liability whatsoever with regard to the use of such information. Reproduction of this catalogue whether in part or whole, is strictly prohibited.